

- **Only public research institution dedicated entirely to health research in France**
- **Created in 1964**
- **Under the authority of the French Ministry of Higher Education and Research and the French Ministry of Health**

# Our missions

- Initiate, develop and coordinate :
  - **all researches** in the field of life and health sciences;
  - **All interventions** to improve population health;
- Contribute to the development of **national policy for research and health**;
- Contribute to national and international **knowledge dissemination**;
- Provide support to higher education and to **training** on research and through research;
- Produce **scientific expertise**.

# Our scope

---

- Basic research
- Pre-clinical and clinical studies
- Cohorts and epidemiological studies
- Expertise and contribution to National health and research policy (e.g. the French national plan « genomics medicine 2025 »)
- Technology transfer



# Inserm in key figures



**Annual budget:**  
**998 million €**

**1st in Europe: participation and coordination of FP7 health collaborative project**

**Largest European RPO devoted to biomedical research**

**Research teams: > 1000**

**Research units: 300**

**Clinical investigation centres: 36**

**Inserm publications: ~10 000/year**

**50.5% international co-publications**

**Human resources:**

**5,000 permanent staff (2,155 researchers)**

**2,700 contractual positions (PhD students and post-docs)**

**4,500 university-hospital personnel**

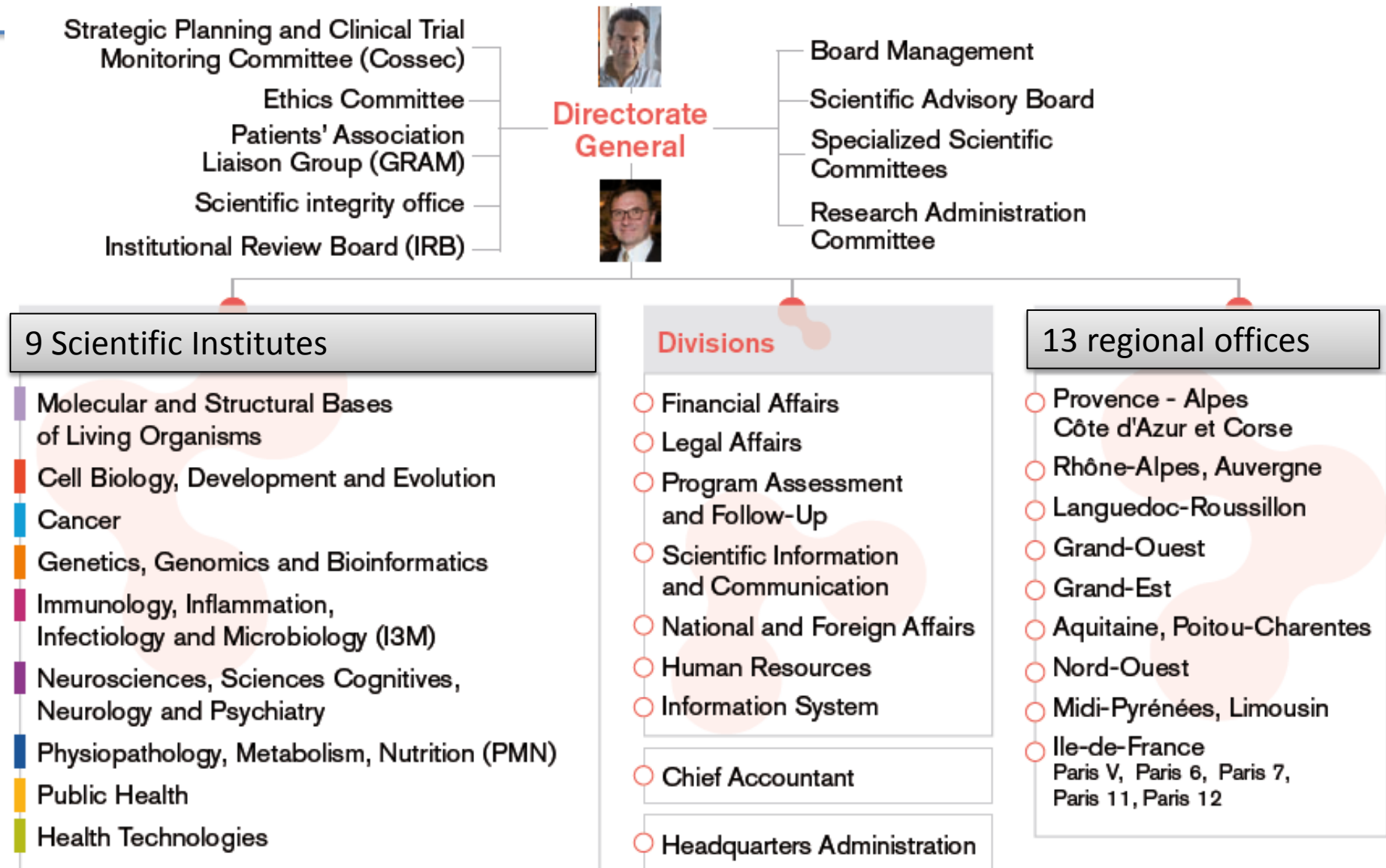
**Patents: 1,279 families – 1st in for patent applications in biomedical research**

**300 New invention disclosures**

**400 Technologies available for licensing**

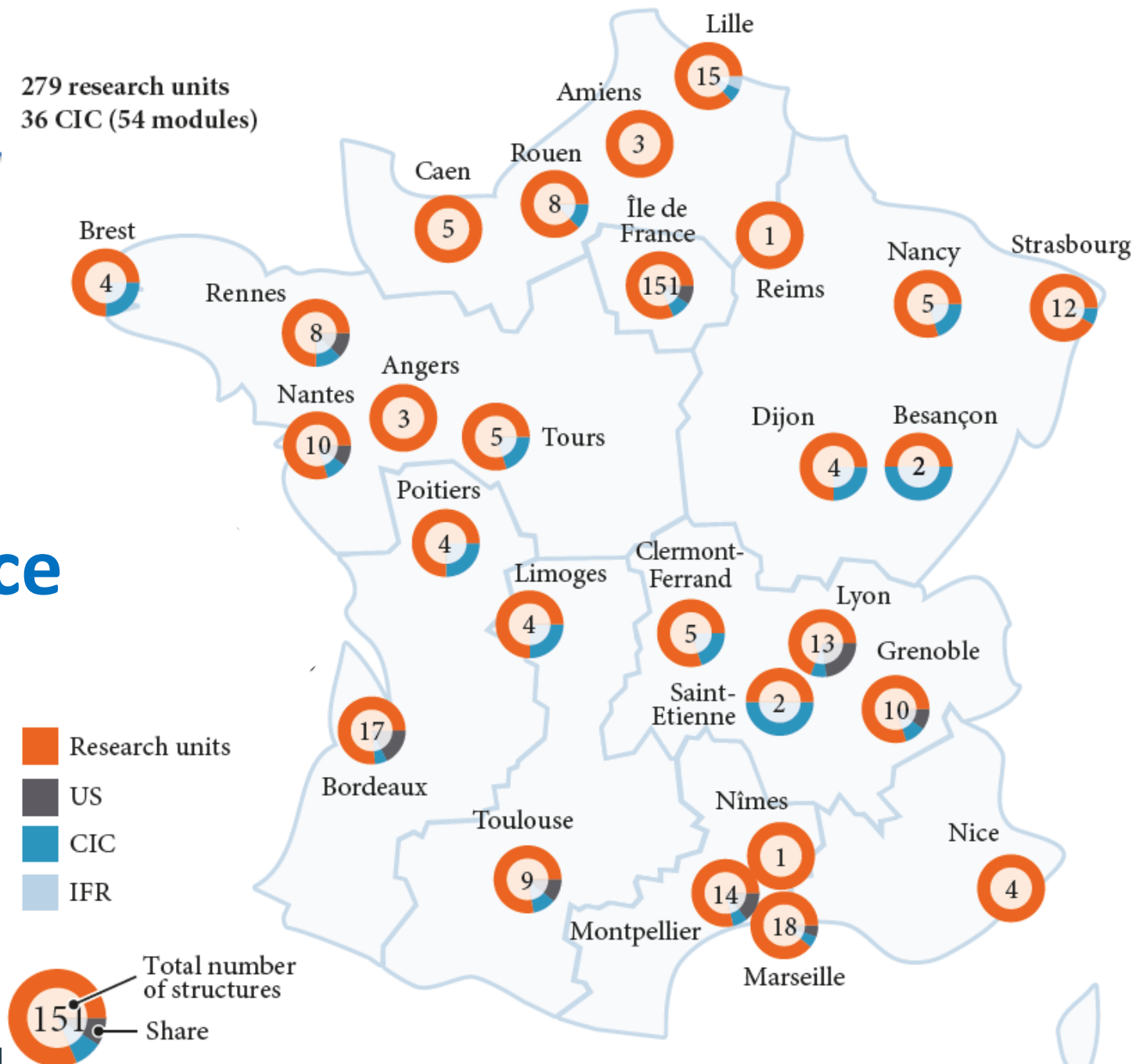
**InsermTransfert**

# Organisation



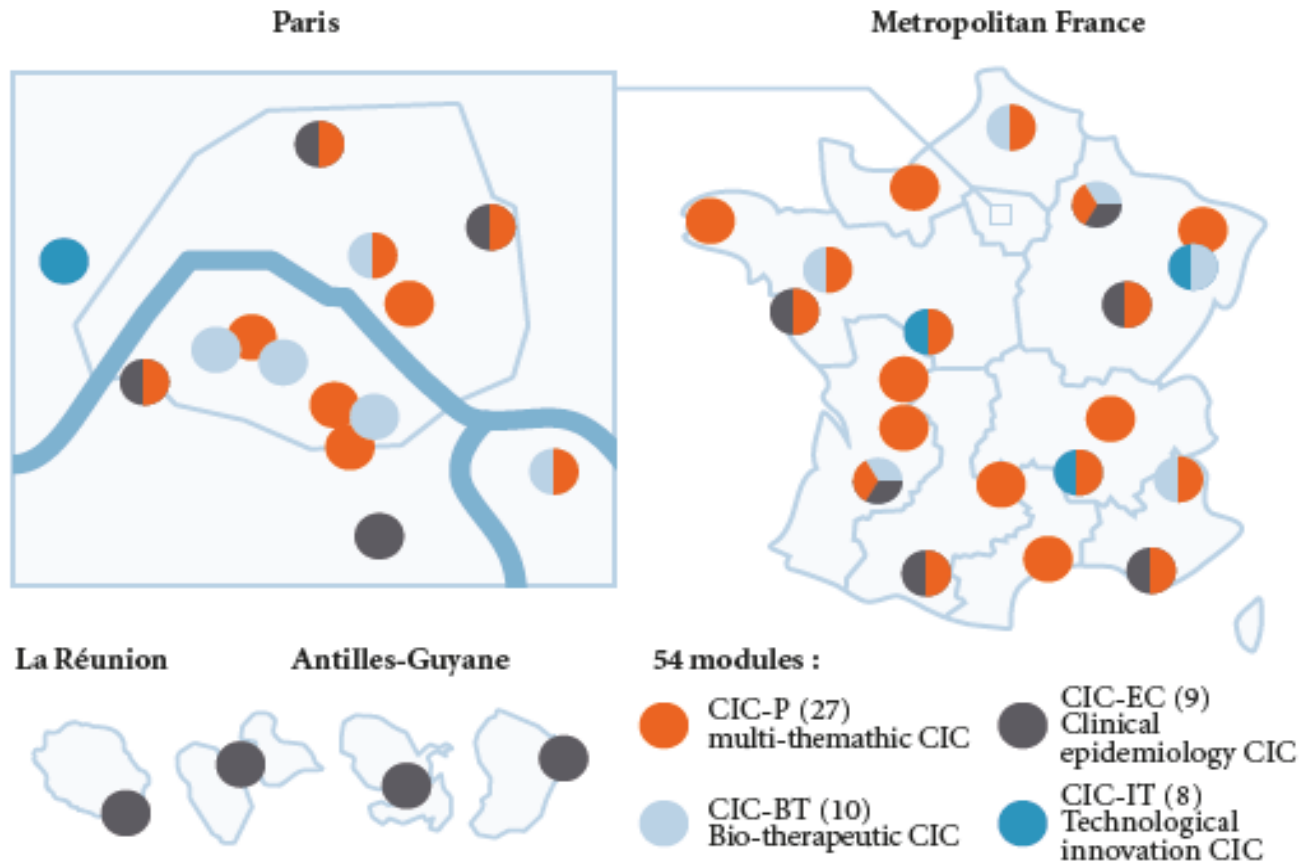
# Inserm in France

279 research units  
36 CIC (54 modules)



# Clinical studies

- 374 ongoing trials sponsored by Inserm (in France and abroad)
- Supported by 36 clinical investigation centers





# Cohorts and large epidemiological studies

---

- Over **400,000** people enrolled within Inserm cohorts today
- From historical cohorts to ambitious programs, some examples :
  - **ELFE** Cohort : 20,000 children born in 2010 from birth to adulthood
  - The Rare Disease Cohorts Programme **RaDiCo** ( fundings 10 M€, PIA) : target 250,000 people with RD in > 12 cohorts
  - **Constances** Cohort: target 200,000 subjects representative of the French population aged 18 to 69 years with biobank of 100,000 subjects
- **Major French health databases** useful for research and expertise in public health accessible online ("Portail Epidémiologie France" and "Orphanet")



# Our main partners

---

- 37 Universities
- Research units in 29 University Hospitals
- Health industry
- European and International academics and RPO





# Inserm around the world

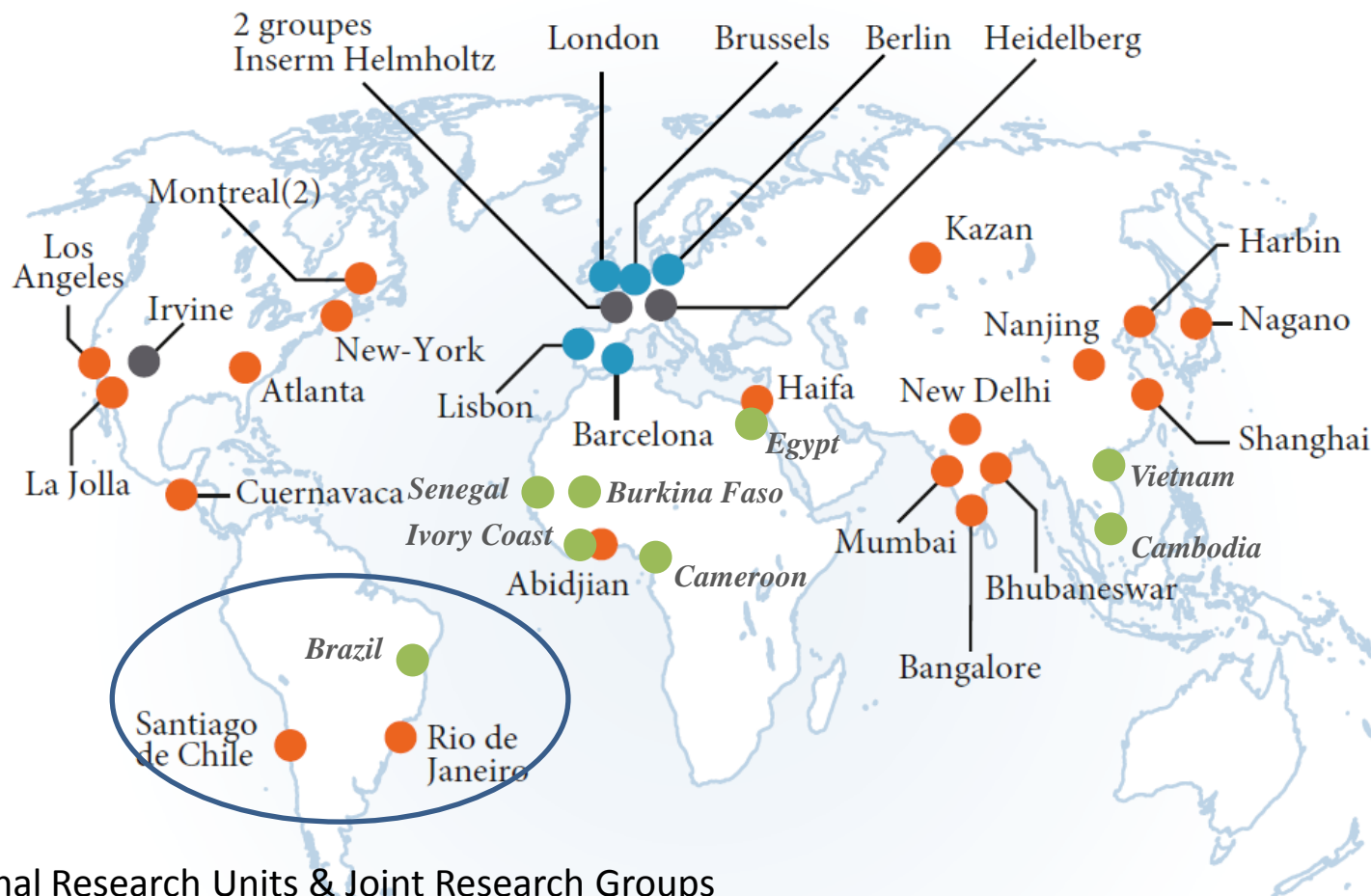
# A strong culture of international partnerships

- **2** Inserm offices abroad in Brussels (Belgium) and Washington, DC (USA)
- **6,500** collaborations between Inserm teams and international teams



- **~2,400** international visiting researchers in Inserm laboratories
- **730** international researchers employed by Inserm
- **51** Inserm researchers working abroad

# International structures



2015 data

# Participation in European programmes fostering International cooperation

- **Joint Programming Initiatives (JPI):**

- ☐ Neurodegenerative disorders



- ☐ Antimicrobial resistance



- **ERANETs :**



- ☐ Rare diseases



- **Future and Emerging Technologies (FETs):**

- ☐  Human Brain Project

- **Alliances:**

- ☐ Infectious disease preparedness



- **Infrastructures:**

